

REDISCOVER AMAZING THAILAND PHUKET AND KHAO LAK





PHUKET

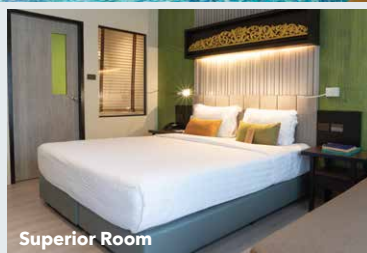


DEEVANA PATONG RESORT AND SPA

Conveniently located in the entertainment hub of Patong just minutes away from the famous Bangla Road's nightlife, Jungceylon shopping and entertainment centre and the golden sands of Patong Beach.

INCLUDES:

- 7 nights at Deevana Patong Resort and Spa ★★★★★ in a Superior - Garden Wing Room
 - Full breakfast daily
 - **BONUS** 30-minute Foot Reflexology and 30-minute Back & Shoulder massage
 - **BONUS** 10% discount on food only (excludes room service)
 - **BONUS** 10% discount on Spa package menu
 - **COMPLIMENTARY** welcome drink upon arrival
- Return private transfers from Phuket airport to hotel



Superior Room

From **\$285*** per person twin share

SAVE \$256* per person



CREST RESORT AND POOL VILLAS

Perched on a gentle hillside, on the beautiful Tri Trang Beach, just outside Patong, with stunning views of the Andaman Sea's turquoise waters. The resort is the perfect place for a well deserved getaway within an enchanting tropical setting.

INCLUDES:

- 7 nights at Crest Resort and Pool Villas ★★★★★ in a Deluxe Room
 - Full breakfast daily
 - **BONUS** 1 x 30 minute Thai or Foot Massage for two
 - **BONUS** 1 x Set Afternoon Tea
 - **BONUS** 20% discount on spa treatment
 - **BONUS** 20% discount on food and beverage (excludes alcohol and minibar)
 - **COMPLIMENTARY** Wi-Fi
- Return private transfers from Phuket airport to hotel



Deluxe Room

From **\$299*** per person twin share

SAVE \$329* per person

UPGRADE to a Deluxe Sea View from **\$79*** pp twin share OR a Deluxe Pool Access from **\$175*** pp twin share

IMPORTANT INFORMATION: *On sale until 30 Apr 22 or until sold out. Valid for travel: Deevana Patong Resort and Spa: 1 Apr - 30 Nov 22; Crest Resort and Pool Villas: 1 Apr - 31 Oct 22. Add on an extra \$101* per person for travel 1 Nov - 25 Dec 22. Refer to website for full package details.

VIVA HOLIDAYS



PHUKET



Sino Deluxe Room

THE OLD PHUKET

Centrally located in tranquil Karon Beach. It is walking distance to shopping, restaurants and across the road to the white sandy beach and crystal clear waters of the Andaman Sea.

INCLUDES:

- 7 nights at The Old Phuket ★★★★★ in a Sino Deluxe Room - Sino Wing
 - Full breakfast daily
 - **BONUS** 1 x Thai Set Dinner (food only) per person
 - **BONUS** 1 x 30 minute Thai Massage per person
- Return private transfers from Phuket airport to hotel

From **\$309*** per person twin share

SAVE \$337* per person

UPGRADE to a Deluxe Pool View - Serene Wing from **\$109*** pp twin share **OR** a Deluxe Pool Access - Serene Wing from **\$166*** pp twin share



Deluxe Ground Terrace

KAMALA BEACH RESORT A SUNPRIME RESORT

A complete resort for adults only, the facilities, rooms and direct access to the beach make it a great choice. The hotel is located directly on Kamala Beach, on the west side of Phuket Island offering perfect tranquility and a stunning beach with magical sunsets.

INCLUDES:

- 7 nights at Kamala Beach Resort (a Sunprime Resort) ★★★★★ in a Deluxe Ground Terrace
 - Full breakfast daily
 - **BONUS** Includes 3 **FREE** nights
 - **BONUS** THB2000 resort credit
 - **COMPLIMENTARY** Wi-Fi
- Return private transfers from Phuket airport to hotel

From **\$319*** per person twin share

SAVE \$249* per person

UPGRADE to a Grand Deluxe from **\$68*** pp twin share

IMPORTANT INFORMATION: *On sale until 30 Apr 22 or until sold out. Valid for travel: The Old Phuket: 1 Apr - 31 Oct 22; Kamala Beach Resort (a Sunprime Resort): 1 Apr - 31 Oct 22. Add on an extra \$134* per person for travel 1 Nov - 25 Dec 22. Refer to website for full package details.

VIVA HOLIDAYS

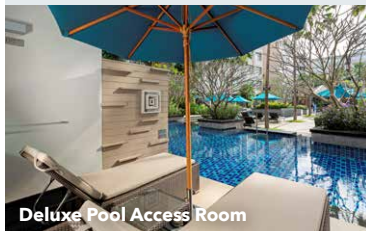


GRAND MERCURE PHUKET PATONG

Just steps away from Patong's nightlife, the resort is a serene hideaway tucked behind Phuket's Andaman seafront. It is ideally suited to young travellers, families and friends looking to spend quality time together in the heart and soul of Patong.

INCLUDES:

- 7 nights at Grand Mercure Phuket Patong ★★★★★ in a Superior Room
 - Full breakfast daily
 - **BONUS** Set Lunch or Dinner including a glass of juice/soft drink for two
 - **BONUS** 25% spa discount
 - **COMPLIMENTARY** welcome drink upon arrival
 - **COMPLIMENTARY** 2 bottles of drinking water daily
- Return private transfers from Phuket airport to hotel



Deluxe Pool Access Room



Superior Room

From **\$399*** per person twin share

SAVE \$365* per person

UPGRADE to a Deluxe Pool Access from **\$136*** pp twin share

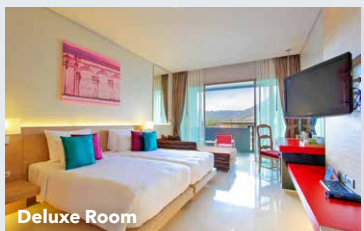


THE KEE RESORT & SPA

In the heart of Patong's famous walking streets filled with shops and a variety of vibrant entertainment venues. The resort grounds act as a thoroughfare connecting Soi Sea Dragon, Bangla Road, and the Beach Road with Patong Beach just a few steps away.

INCLUDES:

- 7 nights at The Kee Resort & Spa ★★★★★ in a Plaza Room
 - Full breakfast daily
 - **BONUS** Includes 3 **FREE** nights
 - **BONUS** guaranteed upgrade to a Deluxe Room
 - **BONUS** 10% discount on all Spa and Food and Beverage when dining in house at resort outlets
 - **COMPLIMENTARY** welcome drink upon arrival
 - **COMPLIMENTARY** Wi-Fi
- Return private transfers from Phuket airport to hotel



Deluxe Room

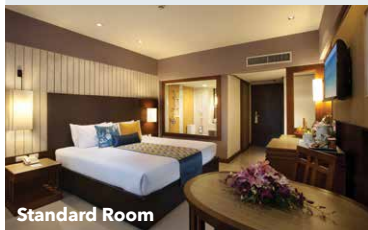
From **\$429*** per person twin share

SAVE \$380* per person

UPGRADE to a Deluxe Pool Access Room from **\$284*** pp twin share

IMPORTANT INFORMATION: On sale until 30 Apr 22 or until sold out. Valid for travel: Grand Mercure Phuket Patong: 1 Apr - 31 Oct 22. Add on an extra \$117* per person for travel 1 Nov - 23 Dec 22, 8-20 Jan, 30 Jan - 31 Mar 23; The Kee Resort & Spa: 1 Apr - 31 Oct 22. Refer to website for full package details.





Standard Room



PATONG MERLIN HOTEL

A popular resort in a great location with friendly and attentive service. The property is set amongst 8 acres of palm trees and tropical gardens. Situated just across the road from the beach and only a few minutes walk to the heart of Patong.

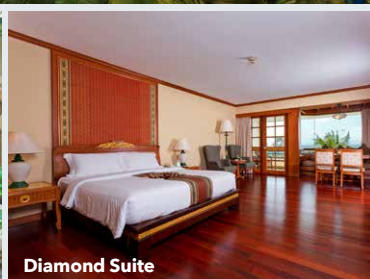
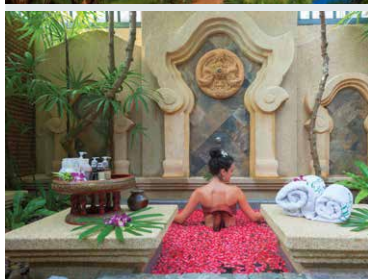
INCLUDES:

- 7 nights at Patong Merlin Hotel ★★★★★ in a Standard Room
- Full breakfast daily
 - **BONUS** Includes 3 **FREE** nights
 - **BONUS** Resort Credit of THB1000
 - **BONUS** Late Check-out until 6.00pm
 - **BONUS** 20% discount for food and beverage at any restaurant
 - **BONUS** 50% discount for laundry
 - **COMPLIMENTARY** Wi-Fi
- Return private transfers from Phuket airport to hotel

From **\$459*** per person twin share

SAVE \$370* per person

UPGRADE to a Superior Pool View Room from **\$56*** pp twin share **OR** a Deluxe Pool View Room from **\$156*** pp twin share



Diamond Suite

THE DIAMOND CLIFF RESORT & SPA

At Diamond Cliff Resort and Spa, experience an authentic Thai luxury resort nestled on the gentle hills of Patong with breathtaking panoramic views of the Andaman Sea. Spacious, private and totally romantic, this idyllic retreat is a sanctuary for relaxation in a perfect location to enjoy the spoils of Patong City just minutes away.

INCLUDES:

- 7 nights at The Diamond Cliff Resort and Spa ★★★★★☆ in a Super Deluxe Seaview
 - Full breakfast daily
 - **BONUS** Includes 3 **FREE** nights
 - **BONUS** guaranteed upgrade to a Diamond Suite
 - **BONUS** 30 minute Thai massage for two
 - **COMPLIMENTARY** Wi-Fi
 - **COMPLIMENTARY** scheduled shuttle bus service to Patong shopping centre
- Return private transfers from Phuket airport to hotel

From **\$469*** per person twin share

SAVE \$456* per person

KHAO LAK & PHUKET



Superior Room

KHAO LAK MERLIN RESORT

The Khao Lak Merlin is a boutique luxury resort with a style inspired by Thailand's rich culture. It has direct access to 190 metres of Khao Lak beachfront and is surrounded by 15 acres of lush tropical gardens.

INCLUDES:

- 7 nights at Khao Lak Merlin Resort ★★★★★ in a Superior Room
 - Full breakfast daily
 - **BONUS** Includes 3 **FREE** nights
 - **BONUS** Resort Credit of THB1000
 - **BONUS** Late Check-out until 6.00pm
 - **BONUS** 20% discount for food and beverage at any restaurant
 - **BONUS** 50% discount for laundry
 - **COMPLIMENTARY** Wi-Fi
- Return private transfers from Phuket airport to Khao Lak hotel

From **\$515*** per person twin share

SAVE \$311* per person

UPGRADE to a Deluxe from **\$56*** pp twin share **OR** a Deluxe Pool Access from **\$223*** pp twin share



Deluxe Room

KATATHANI PHUKET BEACH RESORT

An award winning Phuket resort located on secluded Kata Noi Bay with its fine golden sand and crystal-clear waters, the resort is perfect for those who want to get away from it all yet can still have it all.

INCLUDES:

- 7 nights at Katathani Phuket Beach Resort ★★★★★ in a Deluxe Room
 - Full breakfast daily
 - **COMPLIMENTARY** Wi-Fi
- Return private transfers from Phuket airport to hotel

From **\$669*** per person twin share

SAVE \$413* per person

UPGRADE to a Grand Deluxe from **\$82*** pp twin share **OR** a Junior Suite from **\$119*** pp twin share



PHUKET



FAMILY PACKAGE



Studio

SUNWING KAMALA BEACH

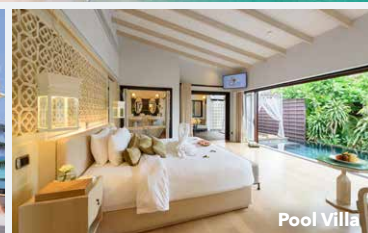
Sunwing Kamala Beach includes all the fun, adventure, and luxury that families want most, elevating the family vacation to world-class standards on the unspoiled Kamala Beach of Phuket.

INCLUDES:

- 7 nights at Sunwing Kamala Beach ★★★★★ in a Studio
 - Full breakfast daily
 - **BONUS** 1 x dinner for two at Som's Kitchen
 - **BONUS** 2 hours of **FREE** baby-sitting for up to 2 kids
 - **BONUS** ice-cream card for 2 kids (10 ice-creams during stay)
 - Up to 2 kids (3-12) eat **FREE**^
- Return private transfers from Phuket airport to hotel

From **\$965*** per family
based on 2 adults and 2 children (3-11yrs) sharing

SAVE
\$716*
per family



Pool Villa

THE SHORE AT KATATHANI

The Shore is an award winning resort boasting an intimate collection of private pool villas and is secluded amongst lush, palm filled gardens. Each villa features a private infinity pool, sunken lounge, bath with rain shower with the majority of villas having a panoramic view of the ocean and looking over Kata Noi Beach.

INCLUDES:

- 7 nights at The Shore at Katathani ★★★★★ in a Pool Villa
 - Full breakfast daily
 - **COMPLIMENTARY** Wi-Fi
- Return private transfers from Phuket airport to hotel

From **\$2,095*** per person twin share

SAVE
\$878*
per person

UPGRADE to a Seaview Pool Villa from **\$546*** pp twin share

IMPORTANT INFORMATION: On sale until 30 Apr 22 or until sold out. Valid for travel: Sunwing Kamala Beach: 1 Apr - 31 Oct 22. Add on an extra \$421* per person for travel 1 Nov - 23 Dec 22; The Shore at Katathani: 21 Apr - 31 Oct 22. Refer to website for full package details.



THAILAND ENTRY REQUIREMENTS - PHUKET SANDBOX PROGRAM

From 1 March 2022, fully vaccinated travellers from any country can apply for a Thailand Pass any time up to 60 days prior to departure.

The Phuket Sandbox allows foreign travellers to visit Phuket province without having to undergo quarantine. A negative RT-PCR test result is required before travellers are free to enjoy leisure activities throughout Phuket. The Sandbox area includes: Chon Buri (Pattaya), Krabi, Phang-Nga (Khao Lak), Phuket, Surat Thani (Ko Samui, Ko Pha-ngan, and Ko Tao) and Trat (Ko Chang).

Amazing Thailand Safety & Health Administration (SHA) is a certificate given by the Tourism Authority of Thailand (TAT) to hotels and services that meet pandemic-level safety and health standards. SHA Extra + hotels are those that not only meet the Amazing Thailand SHA standard but also have more than 70% of employees fully vaccinated and provide an accommodation service in partnership with certified hospitals for the RT-PCR test.

Pre-Arrival Requirements

All travellers must have the following documents for entering Phuket:

- A Thailand Pass, which can be applied for via <https://tp.consular.go.th/>
- Certificate of Vaccination with an approved vaccine at least 14 days before travelling. Children under 12 travelling with parents or guardians are exempt from the vaccination requirement.
- Payment confirmation for 7 days accommodation at an approved SHA Extra+ hotel(s) within Sandbox area.
- A Medical Certificate with an RT-PCR lab result indicating that COVID-19 is not detected issued no more than 72 hours before travelling.
- Confirmation of payment for your 1 RT-PCR test.
 - Krabi, Phang-Nga and Phuket: Travellers can reserve and prepay for 1 RT-PCR test via www.thailandpsas.com this costs 2,100THB (approx AUD90).
- A travel insurance policy with medical coverage of no less than US\$20,000 per person. Contact your travel agent for options.

On Arrival Requirements / During Your Stay

- Present the Thailand Pass QR Code for the Health Control to carry out checks, proceed to Immigration procedures.
- Undergo the RT-PCR Covid-19 test at the reserved accommodation, or the pre-arranged test centre. In Phuket, this test is done at the airport.
- Proceed to the hotel by pre-arranged SHA+ airport transfer.
- Wait for the test result in your hotel room (Day 1).
- All travellers must download and install the MorChana application, and set it on at all times for the COVID-19 precautionary measures and to record the result on Day 5-6 in the application.
- If testing negative, you are allowed to travel anywhere in Sandbox area* the first 7 days and can change accommodation up to three times (can book 3 different hotels).
- If you test positive you will be referred for appropriate medical treatment. Hospital hotel isolation treatment is for at least 10 days and travellers must remain in the appointed accommodation. The expenses must be covered by the required insurance or at own expense for foreign travellers.
- Undergo your second test on Day 5 by Self-Antigen Test Kit method, or when you experience respiratory symptoms. Record the result via the application.

Leaving Thailand

- For domestic departure, after having stayed the first 7 days in the above-mentioned eligible Sandbox destinations, travellers must obtain a 'Release Form' from their accommodation and from Day 8 are free to go anywhere in Thailand.
- For international departure, it is the responsibility of travellers or their organisations to make sure that the travellers meet the requirements of their specific international destination regardless of the point of departure.

Travel policy may change at anytime and is correct as at 1 March 2022. We advise that you keep checking latest updates via TATNews.org or your local travel agent.

travelkey

T (08) 9444 2633 | 1300 852 182

E hello@travelkey.com.au

travelkey.com.au

festivaltravel.com.au

T (08) 9444 6200 | 1300 921 148

E info@festivaltravel.com.au

festivaltravel.com.au



Find us
online!

Independently owned and operated by
Silver Steam Pty Ltd ATAS Accreditation
A11816 ABN 59 735 847 922

IMPORTANT BOOKING CONDITIONS

*AGENTS MAY CHARGE SERVICE FEES AND/OR FEES FOR CARD PAYMENTS WHICH VARY. A FEE WILL APPLY FOR PAYMENTS MADE BY DEBIT AND CREDIT CARDS. PLEASE CHECK THIS FEE WITH US OR YOUR TRAVEL CONSULTANT WHEN BOOKING. Conditions apply. Prices correct as at 8 March 22 but may fluctuate if surcharges, fees, taxes or currency change. Offers end 30 Apr 22. Offers subject to availability. Amounts payable to third parties not included. Please check all prices, availability and other information with your travel consultant before booking. Room upgrades and late check-outs are subject to availability unless otherwise stated. Bookings must be made direct with Viva Holidays or a travel agent. Package cancellation fees apply. Ratings provide a general indication of the standard of accommodation. These are our own views and not related to any other rating system. 3 star (★) indicate a comfortable standard of accommodation, 4 star indicate superior standard and 5 star indicate deluxe standard. A half star (☆) indicates an additional half rating. All savings and bonus nights (if applicable) are included in the advertised price. Offers may be withdrawn without notice and are not combinable with any other offers unless stated. Images supplied courtesy of South Australian Tourism Commission. The Viva Holidays General Booking Conditions apply, available at www.vivaholidays.com.au/policies/booking-conditions. Other conditions apply - ask for details. Viva Holidays Pty Ltd ABN 78 634 662 294.