

A woman with long dark hair is seen from behind, sitting in an infinity pool. The pool's edge is perfectly aligned with the horizon of a stunning coastal landscape. The water in the pool is a deep blue, matching the sea beyond. In the distance, several white yachts are anchored in a bay. The coastline is lush with green trees and grass. The sky is a clear, bright blue. A large white geometric shape is visible in the top left corner of the image.

STOP DREAMING ABOUT NEW ZEALAND AND GO LUXURY GETAWAYS

4 NIGHT MATAKAURI LODGE ESCAPE

📍 QUEENSTOWN

Spectacularly located on the shores of Lake Wakatipu, Matakauri Lodge looks out to a mesmerising panorama of the big three; The Remarkables and Cecil and Walter peaks. Just seven minutes from bustling Queenstown, this is an alpine, lakeside retreat, nestled in one of the world's most strikingly beautiful landscapes. With clean lines in glass, stone and timber, Matakauri's own take on luxury is understated and welcoming.

GETTING THERE: Matakauri Lodge is located in Queenstown and a 30 minute drive from Queenstown airport. We can arrange a private car transfer or car hire for you at an additional charge.

INCLUDES:

- 4 nights at Matakauri Lodge ★★★★★ in a Lodge Room
 - Full breakfast, lunch and gourmet dinner daily
 - Pre dinner drinks with hors d'oeuvres
 - Mini bar, excluding wine and spirits
 - Wi-Fi
 - Car parking
 - Daily newspaper

- **BONUS** \$250* Viva Holidays Travel Voucher

from **\$2,545*** per person twin share

SAVE \$1,032* PER PERSON



BONUS \$250* VIVA HOLIDAYS TRAVEL VOUCHER

4 NIGHT CAPE KIDNAPPERS INDULGENCE

📍 HAWKES BAY

Far out to the east of Hawke's Bay wine country, The Farm at Cape Kidnappers sits atop rolling farmland and rugged cliffs that give way to vast sea views. Home to not only a lodge and spa, this unique property also boasts the awarded-winning Tom Doak-design golf course, a sanctuary for some of New Zealand's most precious flora and fauna, and a working sheep and cattle station.

GETTING THERE: Cape Kidnappers is located in Hawkes Bay, a 40 minute drive from Napier airport. We can arrange a private car transfer or car hire for you at an additional charge.

INCLUDES:

- 4 nights at The Farm at Cape Kidnappers ★★★★★ in a Hilltop Suite
 - Full breakfast, lunch and gourmet dinner daily
 - Pre dinner drinks with hors d'oeuvres
 - Mini bar, excluding wine and spirits
 - Wi-Fi
 - Car parking

- **BONUS** \$250* Viva Holidays Travel Voucher

from **\$2,975*** per person twin share

SAVE \$1,491* PER PERSON



IMPORTANT INFORMATION: *Conditions apply. Valid for travel: 1 Jul - 14 Oct 21. Travel also available 15 Oct 21 - 30 Nov 21, seasonal surcharges apply. *Voucher applies for bookings of 3 nights or more at either Matakauri Lodge, The Farm at Cape Kidnappers or The Lodge at Kauri Cliffs and must be used for additional land arrangements bookable through Viva Holidays in conjunction with your New Zealand holiday. Voucher is applicable to bookings made between 1 July and 30 November 2021, for travel until 31 March 2022. Voucher is non-transferrable, cannot be exchanged for cash and cannot be deferred to a later booking or refunded. Any unused value is forfeited. One voucher per booking. Refer to back page for full details.

VIVA HOLIDAYS

BONUS \$250* VIVA HOLIDAYS TRAVEL VOUCHER



4 NIGHT KAURI CLIFFS GETAWAY

📍 MATAURI BAY

Sophisticated and elegant, The Lodge at Kauri Cliffs has panoramic views across the Pacific Ocean. Tastefully designed by Virginia Fisher, the lodge is timelessly beautiful; offering space, comfort and complete relaxation amidst the homeliness of soft furnishings, warm carpets and blonde woods. Resting on an unspoilt coastline where high cliffs give way to three pristine private beaches, Kauri Cliffs is experiential travel at its best.

GETTING THERE: The Lodge at Kauri Cliffs is located in Matauri Bay, a 30 minute drive from Bay of Islands airport. We can arrange a private car transfer or car hire for you at an additional charge.

INCLUDES:

- 4 nights at The Lodge at Kauri Cliffs ★★★★★ in a Suite
 - Full breakfast, lunch and gourmet dinner daily
 - Pre dinner drinks with hors d'oeuvres
 - Mini bar, excluding wine and spirits
 - Wi-Fi
 - Car parking
- **BONUS** \$250* Viva Holidays Travel Voucher

from **\$2,975*** per person twin share

SAVE \$1,491* PER PERSON



IMPORTANT INFORMATION: *Conditions apply. Valid for travel: 1 Jul - 14 Oct 21. Travel also available 15 Oct 21 - 31 Mar 22, seasonal surcharges apply. *Voucher applies for bookings of 3 nights or more at either Matakauri Lodge, The Farm at Cape Kidnappers or The Lodge at Kauri Cliffs and must be used for additional land arrangements bookable through Viva Holidays in conjunction with your New Zealand holiday. Voucher is applicable to bookings made between 1 July and 30 November 2021, for travel until 31 March 2022. Voucher is non-transferrable, cannot be exchanged for cash and cannot be deferred to a later booking or refunded. Any unused value is forfeited. One voucher per booking. Refer to back page for full details.

VIVA HOLIDAYS



Delamore Lodge, Waiheke Island



Luxury Suite, Delamore Lodge



Church Bay Studio, Waiheke Island

5 NIGHT GOURMET AUCKLAND & WAIHEKE ISLAND

📍 AUCKLAND – WAIHEKE ISLAND – AUCKLAND

Experience the best of Auckland and Waiheke Island's food and wine on this indulgent 5 night itinerary. Staying at the luxury boutique QT Auckland and the stunning resort style lodge on Waiheke Island.

GETTING THERE: QT Auckland is a 30 minute drive from Auckland Airport, a private car transfer is included. A return 35 minute ferry is included across to Waiheke Island. Return transfers from Matiatia ferry terminal to Delamore Lodge are also included.

INCLUDES:

- 2 nights at QT Auckland ★★★★★ in a QT King including:
 - Full breakfast at Esther daily
 - 3-course dinner at Esther including one exclusive off-menu dish (once per stay)#
 - One bottle of wine expertly paired with your dinner menu (once per stay)
- Return ferry crossing Auckland to Waiheke
- Return transfers from Matiatia ferry terminal to Delamore Lodge
- 3 nights at Delamore Lodge, Waiheke Island ★★★★★ in a Luxury Suite including:
 - Breakfast daily, two-course dinner nightly and welcome drink + platter
- 6.5 hour Private Gourmet Food & Wine Tour with Platter Lunch
- Half day private Waiheke Island Art Walking Tour with Lunch
- Free Wi-Fi
- Private car transfer from Auckland Airport to QT Auckland

from **\$3,235*** per person
twin share

IMPORTANT INFORMATION: *Conditions apply. Valid for travel: 1 Jul - 30 Sep 21. Add on an extra \$83* per person for travel 1 Oct - 23 Dec 21, 6 Jan - 31 Mar 22. #Restaurant reservation must be pre-booked and is subject to availability at time of booking, if not available alternative arrangements will be made. Refer to back page for full details.

VIVA
HOLIDAYS



3 NIGHT KINLOCH MANOR AND VILLAS GETAWAY

📍 LAKE TAUPO

Discover a stronghold dedicated to unique expressions and personal luxury... an enduring monument that stands guard over the land and celebrates difference. Kinloch Manor & Villas reveres the unconventional, the modern, the daring... a contemporary shrine to individuality. Escape to a unique sanctuary where you can find true expression and be yourself... where your spirit can soar free.

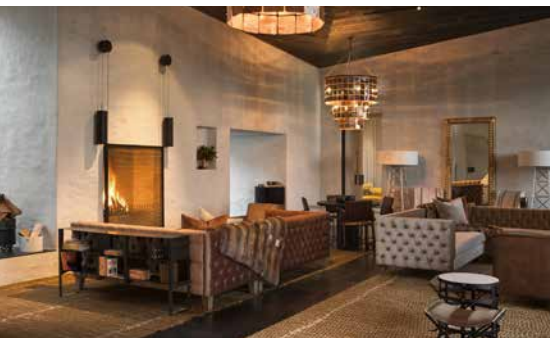
GETTING THERE: Kinloch Manor is located on the edge of Lake Taupo, just a 30 minute drive from Taupo Airport and one hour drive from Rotorua. We can arrange a private car transfer or car hire for you at an additional charge.

INCLUDES:

- 3 nights at Kinloch Manor and Villas ★★★★★ in a Junior Suite
 - Full breakfast and dinner daily
 - Pre-dinner drink and canapes
 - Use of tennis courts and Golf Academy facilities
 - Use of bicycles
 - Car parking

UPGRADE: to a 1 Bedroom Villa from **\$1,142*** per person twin share

from **\$1,629*** per person twin share



3 NIGHT HUKA LODGE EXPERIENCE

📍 LAKE TAUPO

Long regarded as one of the world's most revered and inspirational luxury accommodations, Huka Lodge is set among established gardens along the banks of the surging Waikato River near Lake Taupo on New Zealand's North Island. With humble beginnings nearly a century ago as a fishermen's camp made famous for its trout-rich waters and featuring white canvas tents along the river's edge, today Huka Lodge has secured its place as one of the country's oldest and most celebrated luxury lodge with an impressive heritage, welcoming some of the world's most influential guests to the region.

GETTING THERE: Huka Lodge is located in Taupo and a 1 hour drive from Rotorua. Huka Lodge offers courtesy transfers from Taupo Airport, alternatively we can arrange a private car transfer from Rotorua or car hire for you at an additional charge.

INCLUDES:

- 3 nights at Huka Lodge ★★★★★ in a Junior Lodge Suite
 - Full country breakfast daily
 - 5-course dinner
 - 3-course lunch for two once per stay
 - 1 hour of pre-dinner drinks and canapes
 - Use of all lodge facilities
 - Wi-Fi
 - Car parking
 - Return Taupo airport transfers

from **\$3,059*** per person twin share



IMPORTANT INFORMATION: *Conditions apply. Valid for travel: Kinloch Manor and Villas: 1 Apr - 31 Oct 21. Add on an extra \$1058* per person for travel 1 Nov 21 - 31 Mar 22. Huka Lodge: 1 May - 30 Sep 21. Travel is also available 1 Oct 21 - 31 Mar 22, seasonal surcharges apply. Arrivals and departures on 25 Dec 21 are not permitted. A festive season surcharge applies on 24 Dec 21, 26 Dec 21, 31 Dec 21 and 1 Jan 22. Refer to back page for full details.

VIVA HOLIDAYS



3 NIGHT SOLITAIRE LODGE INDULGENCE

📍 ROTORUA

Solitaire Lodge Rotorua, one of the first New Zealand luxury lodges, offers secluded luxury accommodation and attentive hosting from a spectacular lakeside location. Styled with comfort in mind, all 9 luxurious suites feature panoramic views of the glassy lake and magnificent volcano through grand picture windows. Minutes from your doorstep you will discover secluded private bays, hot water beaches and natural thermal hot springs.

GETTING THERE: Solitaire Lodge is a 20 minute drive from Rotorua. We can arrange a private car transfer or car hire for you at an additional charge.

INCLUDES:

- 3 nights at Solitaire Lodge ★★★★★ in an Executive Suite
 - Full country breakfast daily
 - Light lunch daily
 - 5-course evening meal daily
 - Pre-dinner drink and canapes
 - In-room mini bar including alcoholic and non-alcoholic beverages as well as snacks
 - Use of dinghies and kayaks
 - Wi-Fi and car parking

from **\$2,239*** per person twin share



3 NIGHT TREETOPS LODGE LUXURY ESCAPE

📍 ROTORUA

Treetops Lodge & Estate offers the ultimate in world-class luxury accommodation in the heart of New Zealand's unique forest and thermal wonderland, trout fishing mecca and cultural capital, Rotorua. Escape for a few days to your own piece of paradise and savour the peace, tranquillity and spectacular surroundings that engulf you at Treetops.

GETTING THERE: Treetops Lodge is a 20 minute drive from Rotorua. We can arrange a private car transfer or car hire for you at an additional charge.

INCLUDES:

- 3 nights at Treetops Lodge & Estate ★★★★★ in a Lodge Room
 - Full breakfast and dinner daily
 - Pre-dinner drink and canapes
 - Use of kayaks and mountain bikes
 - Access to 64 kilometres of walking tracks, waterfalls and estate animals
 - Wi-Fi & car parking

UPGRADE: to a Villa from **\$1,176*** per person twin share

from **\$1,629*** per person twin share



3 NIGHT HAPUKU LODGE & TREE HOUSES ESCAPE

📍 KAIKOURA

Hapuku Lodge & Tree Houses is a contemporary country hotel located on a deer breeding farm in the South Island of New Zealand, 12 kilometres North of the renowned eco-marine town of Kaikoura. It sits snugly at the base of the Kaikoura Seaward Mountain Range, with the Kaikoura coast and famed Mangamaunu Bay only a kilometre to the east. The Lodge provides luxurious accommodation on Kaikoura's rugged coastline, a place for guests to relax in its intimate indoor/outdoor setting and a place from which they can explore the larger maritime landscape of Kaikoura.

GETTING THERE: Hapuku Lodge & Tree Houses is located just 10 minutes from central Kaikoura and a 2 hour 30 minute drive from Christchurch. Hapuku Lodge offers courtesy transfers from Kaikoura Railway Station, alternatively we can arrange a private car transfer from Christchurch or car hire for you at an additional charge.

INCLUDES:

- 3 nights at Hapuku Lodge & Tree Houses ★★★★★ in a Lodge Room
 - Full breakfast and dinner daily
 - Use of mountain bikes
 - Courtesy transfers
 - Wi-Fi & Car parking

UPGRADE: to a Upper Branch Tree House from **\$789*** per person twin share

from **\$1,389*** per person twin share



3 NIGHT SPLIT APPLE RETREAT GETAWAY

📍 KAITERITERI

The Split Apple Retreat is renowned for its gourmet Asian-Mediterranean fusion cuisine where every ingredient has been selected for its positive contribution to health and wellness. Indulge in the spectacular setting, original art and antiques, and unparalleled service. With the Abel Tasman National Park at your doorstep, pristine nature presents a kaleidoscope of constantly changing colours and patterns.

GETTING THERE: Split Apple Retreat is a 1 hour drive from Nelson on the northern coast of the South Island. We can arrange a private car transfer or car hire for you at an additional charge.

INCLUDES:

- 3 nights at Split Apple Retreat ★★★★★ in a Fuji Suite
 - Gourmet breakfast daily
 - Five-course tasting menu dinner featuring Asian and Mediterranean cuisine
 - Pre-dinner wine and canapes
 - Wi-Fi and car parking

UPGRADE: to a Lotus Suite from **\$348*** per person twin share

from **\$3,269*** per person twin share

IMPORTANT INFORMATION: *Conditions apply. Valid for travel: Hapuku Lodge & Tree Houses: 1 May - 30 Sep 21. Add on an extra \$364* per person for travel 1 Oct - 30 Nov 21, 1-31 Mar 22. Split Apple Retreat: 1 Sep - 15 Nov 21. Add on an extra \$960* per person for travel 16 Nov - 22 Dec 21, 6 Jan - 31 Mar 22. Refer to back page for full details.

VIVA HOLIDAYS

3 NIGHT AHURIRI VALLEY LUXURY ESCAPE

📍 AHURIRI VALLEY

Carved over millions of years by the once fierce glacial waters of the Ahuriri River, the valley is now a tranquil, yet comfortingly rugged slice of paradise in New Zealand's South. And resting almost imperceptibly on the valley floor is The Lindis, a new and truly unique luxury lodge.

GETTING THERE: The Lindis is located in the breathtaking and pristine Ahuriri Valley, a drive from Queenstown on New Zealand's South Island. We can arrange a private car transfer or car hire for you at an additional charge.

INCLUDES:

- 3 nights at The Lindis ★★★★★ in a Pod
 - Breakfast daily
 - Light lunch or packed lunch daily
 - Multi course dinner daily
 - Pre-dinner drink and canapes
 - Mini bar
 - Self-guided activities
 - Car parking

from **\$1,845*** per person twin share



3 NIGHT AZUR LUXURIOUS EXPERIENCE

📍 QUEENSTOWN

Azur is a distinctively contemporary luxury lodge with nine private villas located on a hilltop overlooking some of the most spectacular scenery in New Zealand. The best of both worlds - the feeling of privacy and remoteness and yet in five minutes be part of the local dynamic scene in downtown Queenstown.

GETTING THERE: Azur is a 10 minute drive from central Queenstown. Azur offers courtesy transfers from central Queenstown and Queenstown Airport, alternatively we can arrange a private car transfer or car hire for you at an additional charge.

INCLUDES:

- 3 nights at Azur ★★★★★ in a Villa
 - Full breakfast daily
 - Pre-dinner drink and canapes
 - Afternoon tea
 - Access to Queenstown Gym
 - Mini bar items
 - Wi-Fi
 - Airport transfers and transfers to/from downtown Queenstown

from **\$2,129*** per person twin share



IMPORTANT INFORMATION: *Conditions apply. Valid for travel: The Lindis: 1 May - 31 Oct 21. Azur: 1 Jun - 31 Oct 21. Add on an extra \$712* per person for travel 1 Nov 21 - 31 Mar 22. Refer to back page for full details.



3 NIGHT FIORDLAND LODGE EXPERIENCE

TE ANAU

When you travel to Fiordland, you will be visiting one of the most dramatic and beautiful parts of New Zealand. Fiordland has achieved World Heritage status and is renowned as home to the famous Fiords of Milford and Doubtful Sounds. Focusing on environmental sustainability and key luxury standards, Fiordland Lodge is 'gateway to the fiords' and the perfect base for your Fiordland experience.

GETTING THERE: Fiordland Lodge is a scenic 2 hour drive from Queenstown. We can arrange a private car transfer or car hire for you at an additional charge.

INCLUDES:

- 3 nights at Fiordland Lodge ★★★★★ in a Log Cabin
 - Breakfast and dinner daily
 - Wi-Fi
 - Car parking

UPGRADE: to a Lodge Room from **\$151*** per person twin share

from **\$1,259*** per person twin share



3 NIGHT STONEFLY LODGE RETREAT

NELSON

With beautiful views, 5 star luxury accommodation situated on the banks of the Motueka River, Stonefly Lodge offers the world-class stay that you deserve when fly fishing and exploring Abel Tasman and the surrounding landscape of the region. Stonefly Lodge provides the luxurious accommodation that you would expect from a 5 star retreat in the heart of Motueka Valley, between three of New Zealand's major National Parks - Abel Tasman, Nelson Lakes and Kahurangi. A wide range of nearby world renowned trout rivers and streams let guests enjoy any kind of fly fishing experience; from gentle, flowing, crystal clear waters to those more challenging in the backcountry streams.

GETTING THERE: Stonefly Lodge is a 50 minute drive from Nelson near Abel Tasman National Park on the South Island. We can arrange a helicopter, private car transfer or car hire for you at an additional charge.

INCLUDES:

- 3 nights at Stonefly Lodge ★★★★★ in a Lodge Room
 - Full breakfast daily
 - 4-course dinner daily
 - Pre dinner drinks and canapes
 - Wi-Fi
 - Car parking
 - Use of Ebikes

from **\$2,499*** per person twin share



IMPORTANT INFORMATION: *Conditions apply. Valid for travel: Fiordland Lodge: 1 Sep - 31 Oct 21. Add on an extra \$152* per person for travel 1 Nov 21 - 31 Mar 22. Stonefly Lodge: 1 Jun - 19 Dec 21. Refer to back page for full details.

VIVA HOLIDAYS

TIAKINEWZEALAND.COM
#TIAKIPROMISE



TIAKI PROMISE

WHILE TRAVELLING IN NEW ZEALAND I WILL

CARE FOR LAND, SEA AND NATURE, TREADING
LIGHTLY AND LEAVING NO TRACE

TRAVEL SAFELY, SHOWING CARE
AND CONSIDERATION FOR ALL

RESPECT CULTURE, TRAVELLING
WITH AN OPEN HEART AND MIND

travelkey

T (08) 9444 2633 | 1300 852 182
E hello@travelkey.com.au

travelkey.com.au

festivaltravel.com.au

T (08) 9444 6200 | 1300 921 148
E info@festivaltravel.com.au

festivaltravel.com.au



Independently owned and operated by
Silver Steam Pty Ltd ATAS Accreditation
A11816 ABN 59 735 847 922

*Agents may charge service fees and/or fees for card payments which vary. A fee will apply for payments made by debit and credit cards. Please check this fee with us or your travel consultant when booking. Conditions apply. Prices correct as at 15 Jul 21 but may fluctuate if surcharges, fees, taxes or currency change. Offers end 8 Oct 21. Offers subject to availability. Amounts payable to third parties not included. Please check all prices, availability and other information with your travel consultant before booking. Room upgrades and late check-outs are subject to availability unless otherwise stated. Bookings must be made direct with Viva Holidays or a travel agent. Package cancellation fees apply. Ratings provide a general indication of the standard of accommodation. These are our own views and not related to any other rating system. 3 star (★) indicate a comfortable standard of accommodation, 4 star indicate superior standard and 5 star indicate deluxe standard. A half star (☆) indicates an additional half rating. All savings and bonus nights (if applicable) are included in the advertised price. Offers may be withdrawn without notice and are not combinable with any other offers unless stated. The Viva Holidays General Booking Conditions apply, available at www.vivaholidays.com.au/policies/booking-conditions. Other conditions apply - ask for details. Viva Holidays Pty Ltd ABN 78 634 662 294.